

5-7 Kingdon Street, Newmarket
FOR LEASE



Level 4
357 m²

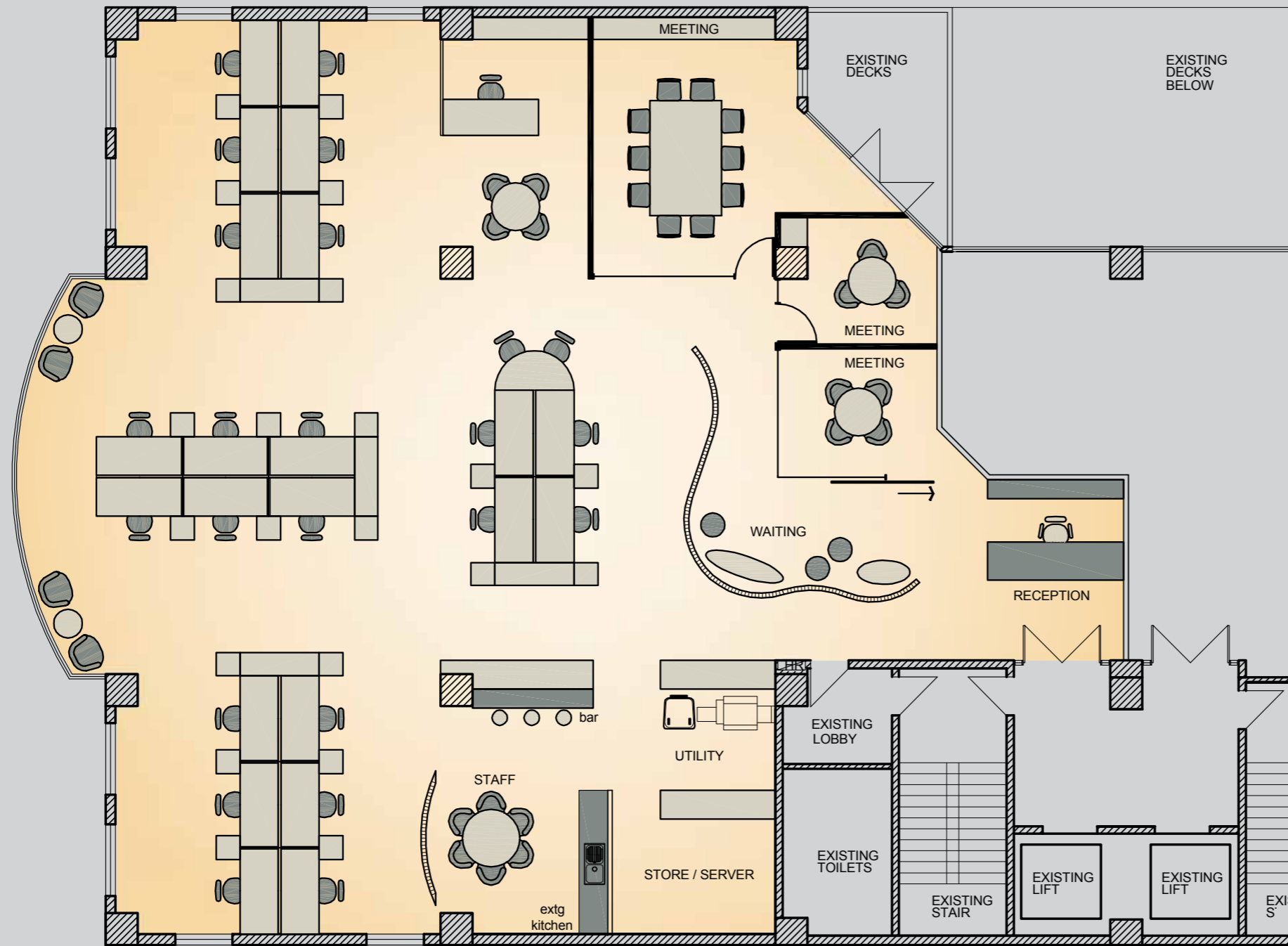
Level 3
352 m²

Level 2
106.6 m²

Ground Level Retail
121 m²

mansons
TCLM LIMITED

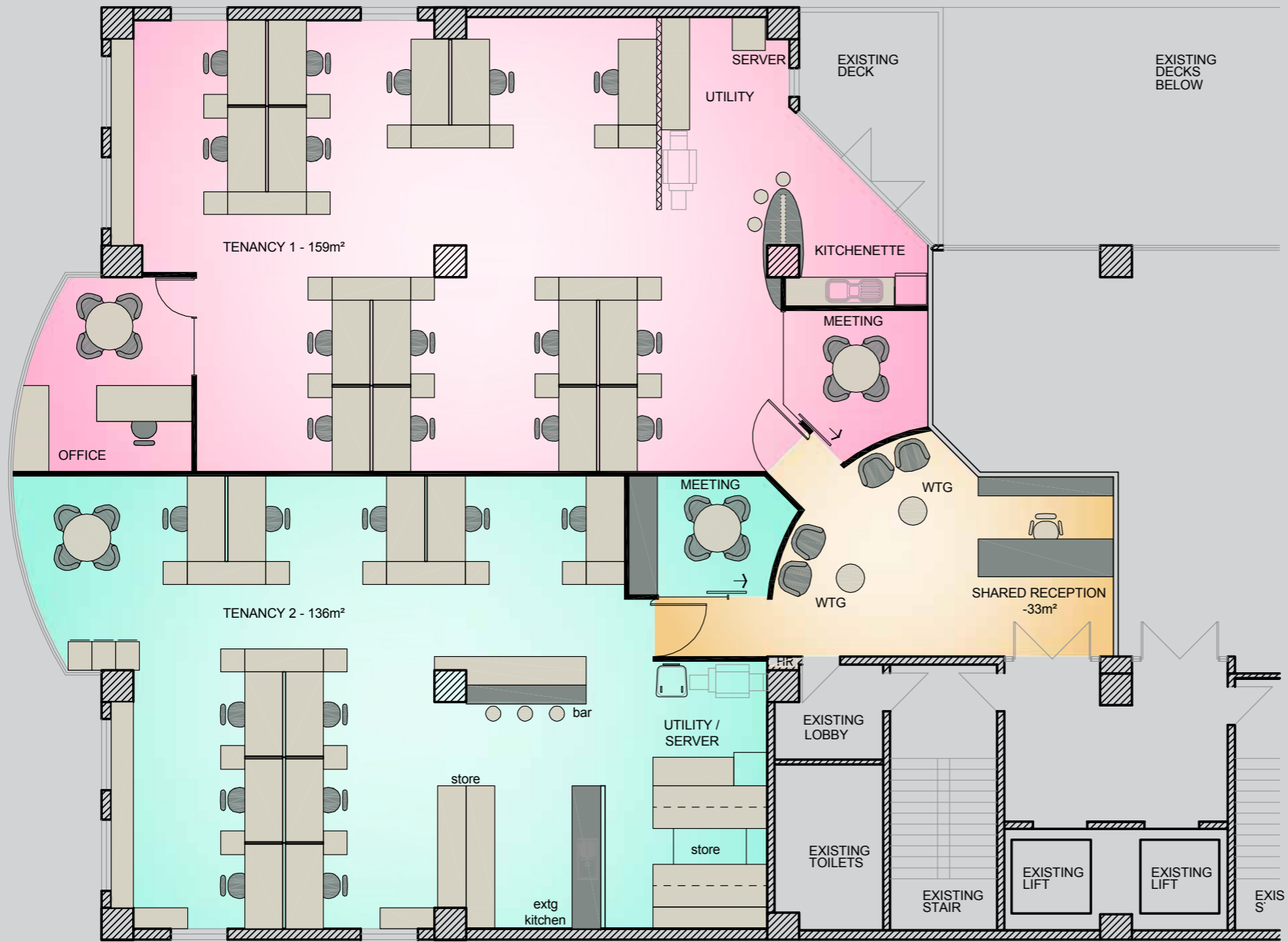
Central to all Newmarket Retail and Cafe Amenity



LEGEND

- EXISTING STRUCTURE TO REMAIN.
- EXISTING PARTITION TO REMAIN.
- EXISTING GLAZING
- NEW FULL HEIGHT SOLID PARTITION.
- NEW FEATURE SCREEN
- NEW FULL HEIGHT GLAZED PARTITION.
- EXISTING DOOR
- NEW DOOR
- NEW SLIDING GLASS DOOR

TENANCY USEABLE AREA:	327 sq.m. APPROX.
MEETING ROOMS	3
OFFICES	-
OPEN PLAN (INCL REC.)	30
TOTAL PAX:	30
AREA PER PERSON:	10.9 sq.m./PERSON



LEGEND

- EXISTING STRUCTURE TO REMAIN.
- EXISTING PARTITION TO REMAIN.
- EXISTING GLAZING
- NEW FULL HEIGHT SOLID PARTITION.
- NEW 2000m HIGH PARTITION
- NEW FULL HEIGHT GLAZED PARTITION.
- EXISTING DOOR
- NEW DOOR
- NEW SLIDING GLASS DOOR
- NEW PIVOT GLASS DOOR

TENANCY COMBINED USEABLE AREA: 327 sq.m. APPROX.	
TENANCY 1	159
MEETING ROOMS	1
OFFICES	1
OPEN PLAN (EXCL REC.)	15
TOTAL PAX:	16
AREA PER PERSON:	11.4 sq.m./PERSON
TENANCY 2 136	
MEETING ROOMS	1
OFFICES	-
OPEN PLAN (EXCL REC.)	11
TOTAL PAX:	11
AREA PER PERSON:	12.5 sq.m./PERSON
SHARED RECEPTION	33sq.m.